

HEBER VALLEY AIRPORT

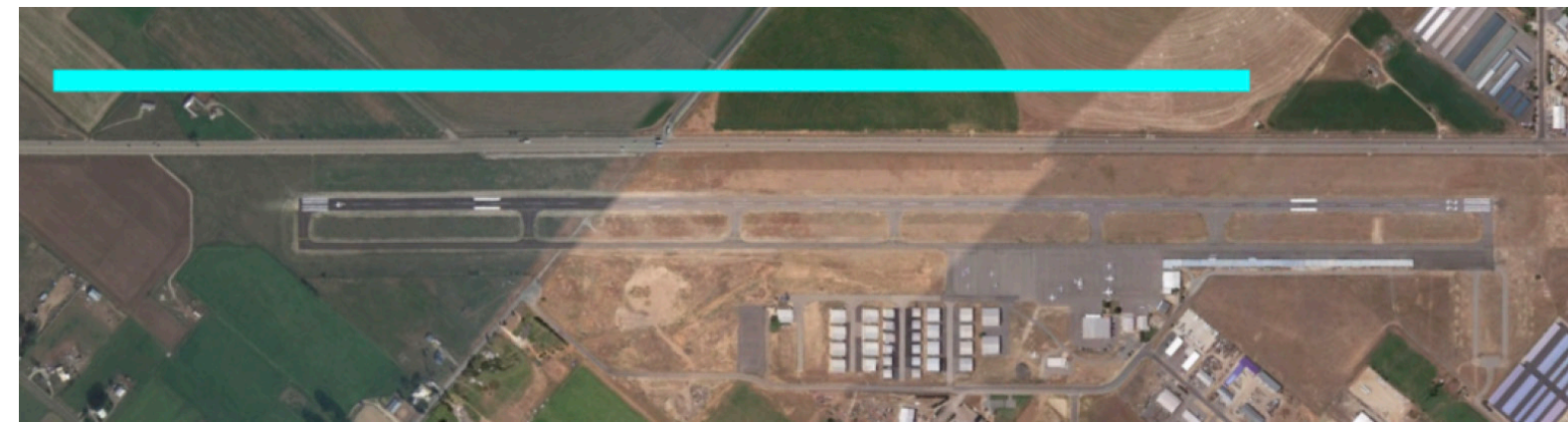
# FLIGHTPATH

PLANNING A SHARED COURSE FOR OUR FUTURE

## PRELIMINARY ALTERNATIVES

1

### Shift of Runway to Northwest



- Incompatible with US 189 and UDOT US 189 re-route alternatives
- Not aligned with community goal of not expanding airport footprint
- Coordinated with FAA on findings; deemed nonviable

2

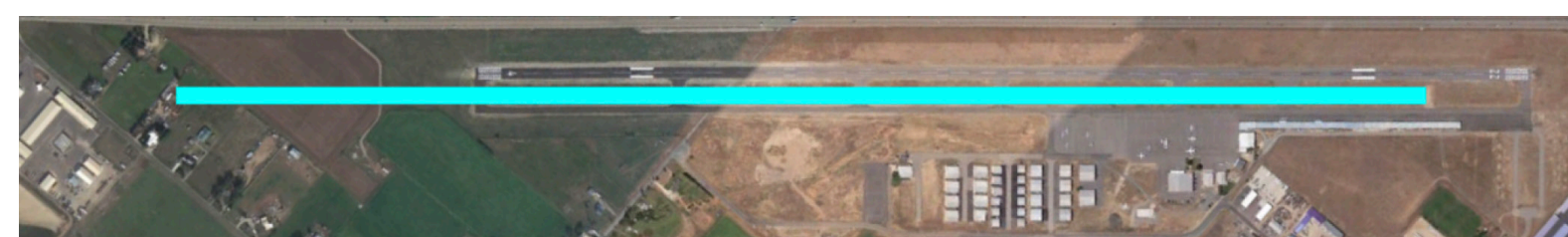
### Reduced Runway Length



- Analyzed current and forecast future users for both dry and wet conditions
- Surveyed aircraft fractional ownership companies
- Level of service negatively impacted by any reduction in runway length
- Reduced economic viability of airport due to impacts on current users
- Coordinated with FAA on findings; deemed nonviable

3

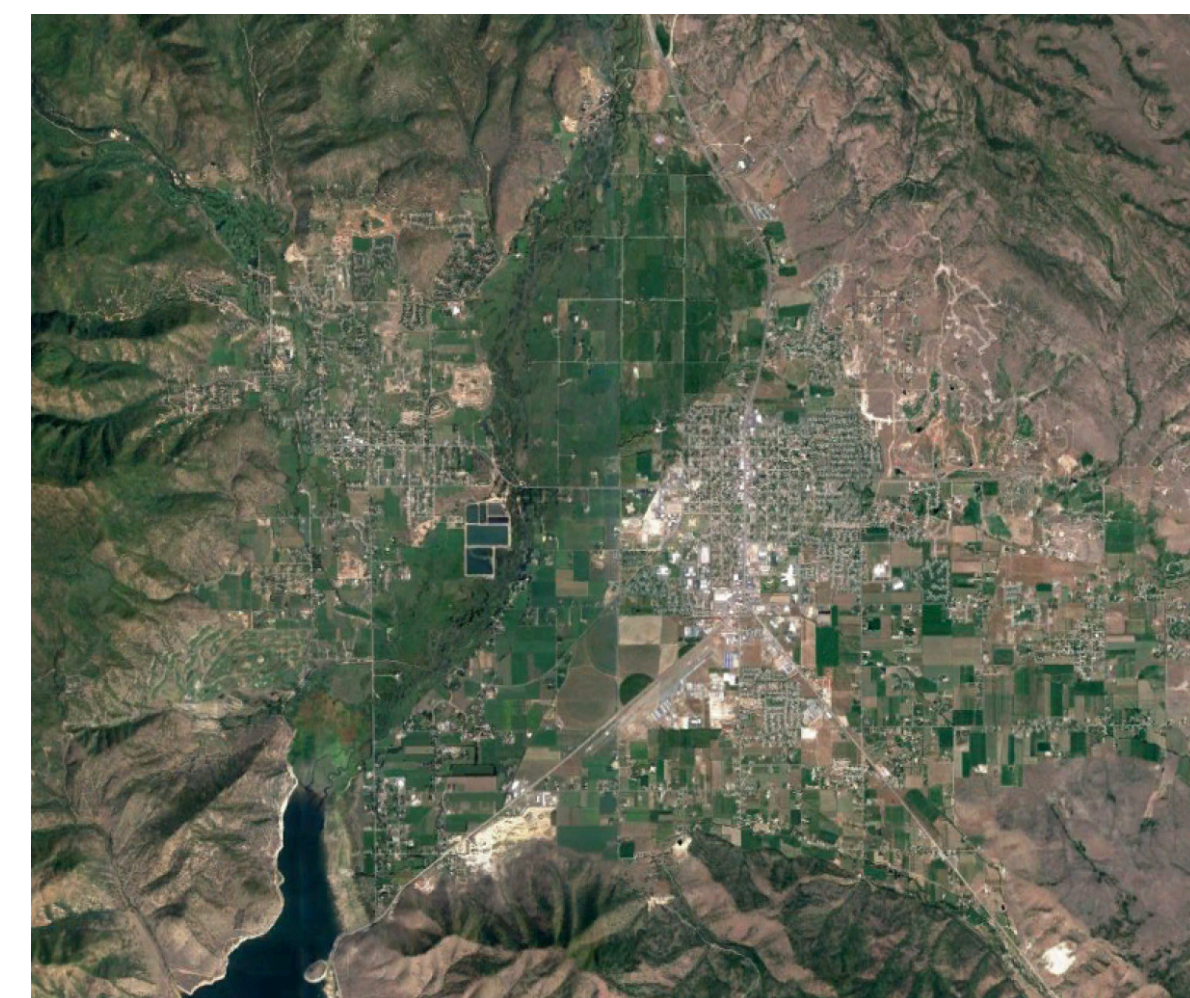
### Recommended Runway Length (Aircraft performance based)



- Analyzed current and forecast future users for both dry and wet conditions
- Surveyed aircraft fractional ownership companies
- Performance data indicated a needed runway length of 8,594' for critical aircraft (Challenger 300/350) in wet conditions
- Land impacts and community impacts too significant
- Not aligned with community goal of not expanding airport footprint
- Proximity to terrain features around the airport would become a factor
- Coordinated with FAA on findings; deemed nonviable

4

### Airport Site Relocation



- Facility requirements can be accomplished at current airport site; relocation would likely not be federally supported
- Relocation not financially viable without federal funding
- Suitable site in Heber Valley not readily apparent
- Coordinated with FAA on findings; deemed nonviable